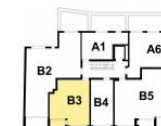
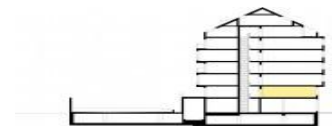


# Rezidence v horkách

FLAT NUMBER

# B3



2+kk / 44.89 m<sup>2</sup> + 2.67 m<sup>2</sup>

2.3.1 Hall	9,39
2.3.2 Living Room	17,70
2.3.3 Bedroom	11,77
2.3.4 Bathroom + WC	6,03
2.3.5 Loggia	2,67

\* Be aware that the surface of the balcony is not included in the total surface of the flat.



0 5m

**IMPACT-CORTI**  
property services

Jankovcova 2c, 170 00 Praha 7,  
Tel: 221 511 160,  
info@rezidence-vhorkach.cz, www.impact-corti.cz

Time  
to meet  
expectations

# Rezidence v horkách

FLAT NUMBER

# B3

2+kk / 44.89 m<sup>2</sup> + 2.67 m<sup>2</sup>

2.3.1 Hall	9,39
2.3.2 Living Room	17,70
2.3.3 Bedroom	11,77
2.3.4 Bathroom + WC	6,03
2.3.5 Loggia	2,67

\* Be aware that the surface of the balcony is not included in the total surface of the flat.



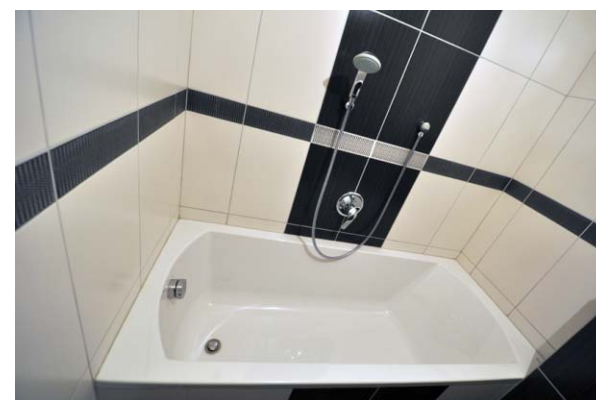
Living



Bedroom



Loggia



Bathroom

**IMPACT-CORTI**  
property services

Jankovcova 2c, 170 00 Praha 7,  
Tel: 221 511 160,  
info@rezidence-vhorkach.cz, www.impact-corti.cz

Time  
to meet  
expectations